

WEST PAC

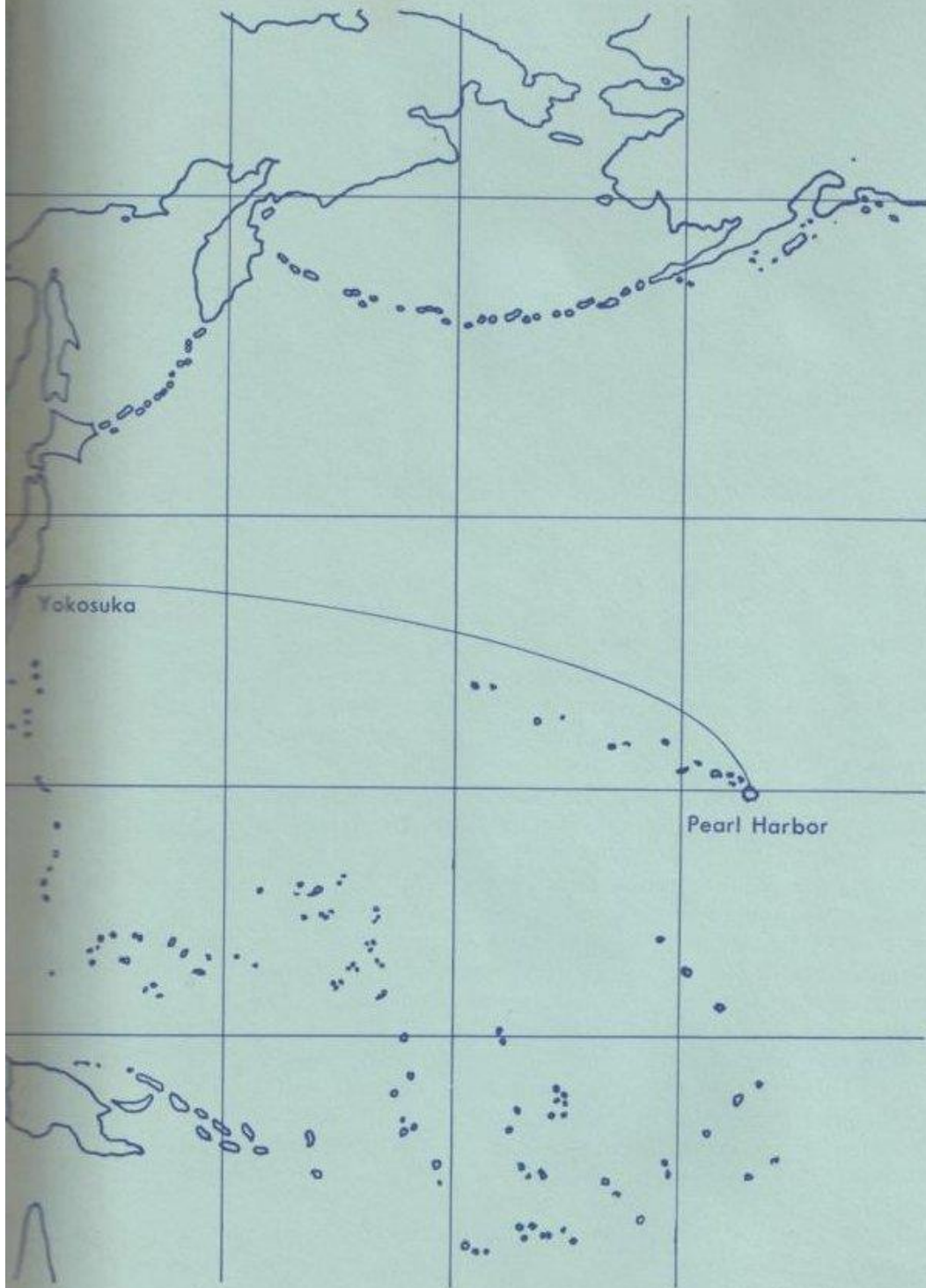
1966



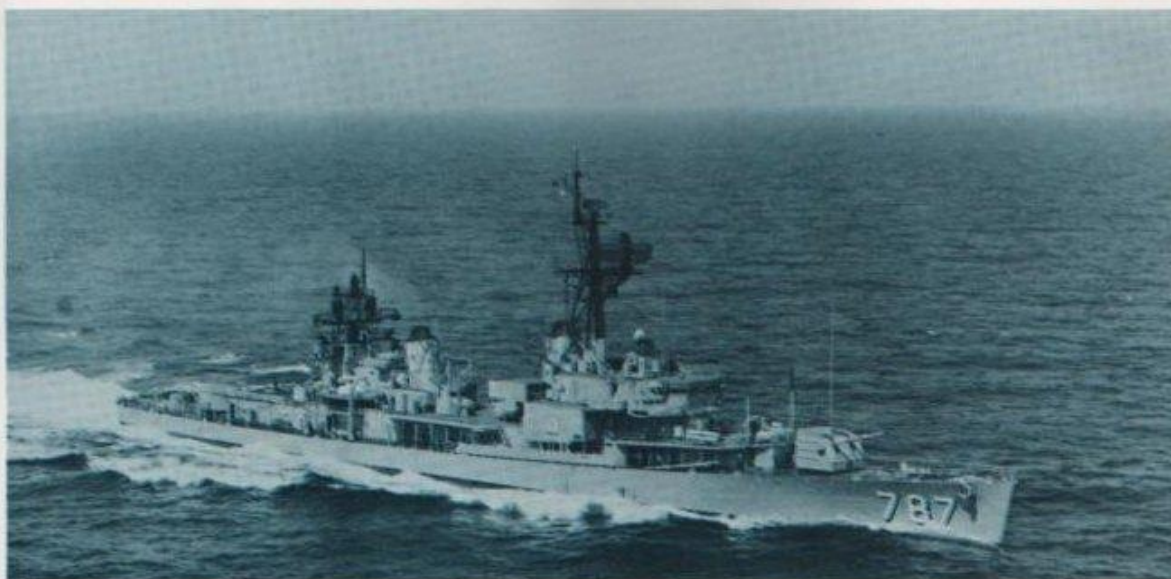
Robert E. Heyward.

Received January 30, 1968.





USS James E. Kyes DD-787



The USS JAMES E. KYES (DD-787) was built by Todd Pacific Shipyards of Seattle, Washington. She was launched on 4 August 1945 and was commissioned on 8 February 1946. She completed FRAM MK 1 conversion at Puget Sound Naval Shipyard on 18 January 1963. The ship was named in honor of, Commander James Elsworth KYES, USN, who received the Navy Cross with the following citation:

"For extraordinary heroism as Commanding Officer of the USS LEARY during action against a concentrated force of hostile enemy submarines in the North Atlantic. As Commander KYES boldly maneuvered to close the range on four of the hostile pack the enemy struck, mortally damaging the LEARY with three torpedo hits and causing her to start sinking rapidly. After giving the order to abandon ship, Commander KYES coolly and courageously made a personal inspection in order to assure himself that none of his men remained aboard. Preparing to abandon the stricken vessel and observing one of his crew whose life jacket was torn and useless, Commander KYES gallantly removed his own, gave it to the man and then calmly went over the side. His heroic conduct and fearless spirit of self sacrifice in a time of grave peril were in keeping with the highest traditions of the United States Naval Service."

Commander KYES was reported Missing in action when it was announced that the LEARY had been sunk on December 24, 1943.

The KYES is a 2200 ton destroyer of the Gearing Class. Her offensive capabilities include all phases of Naval Operations against an enemy including carrier task force operations, shore-bombardment, anti-submarine, anti-aircraft, anti-surface and hunter-killer operations. Since undergoing the MK 1 FRAM Conversion, the KYES specializes in HUK (hunter-killer) operations. To carry out this mission the ship is outfitted for the Navy's newest Anti-submarine warfare weapons - ASROC (Anti-submarine rocket) and DASH (Drone Anti-submarine Helicopter).

HISTORY OF THE LITTLE BEAVERS

The original "Little Beavers" squadron was commissioned in December 1942, when the destroyers Charles AUSBURNE, CONVERSE, CLAXTON, DYSON, SPENCE, FOOT, and STANLEY formed Destroyer Squadron 23 at Orange, Texas. Five months later, under Admiral BURKE, then a Captain, the group joined the Pacific Fleet during the Solomons campaign and began a series of historic naval actions that led to the award of the Presidential Unit Citation, personally presented by Secretary of the Navy, James Forrestal.

Captain BURKE, ordered to intercept and destroy a formation of Japanese destroyers, was told to proceed at full speed. Although his ships had a rated top speed of 30 knots, Captain BURKE replied to the order with "pursuing enemy at 31 knots".

Under cover of darkness, Destroyer Squadron 23 attacked with such ferocity the only enemy ship managing to escape reported she and her formation had been struck by "a division of cruisers and a division of destroyers, assisted by a number of PT boats".

Like beavers, the ships of Destroyer Squadron 23 had done their work at night and left the results for all to see the next day - three Japanese destroyers sunk and one badly damaged. "31-knot" BURKE had led his "Little Beavers" in what historians describe as the "near perfect surface action".

This was the beginning of a new chapter to destroyer warfare in the Pacific. The "smash and run" technique of the "Little Beavers" helped sweep Japanese power in the Pacific.

In their battle march in the South Pacific, the "Little Beavers" were credited with sinking, or assistance in sinking, nine Japanese warships, three merchant vessels and six naval barges. One squadron ship alone was credited with destroying nine enemy planes.

Besides the Battle of Cape St. George, other smashing victories leading to the award of the Presidential Unit Citation included the bombardment of Bougainville, the Battle of Empress Augusta Bay, the Invasion of Green Island, and bombardments of Kavieng, New Ireland, and Rabaul.

Captain BURKE relinquished command of Destroyer Squadron 23 in December 1944, to become Chief of Staff for Admiral Mark Mitscher. His successor, Captain T. B. DUGAN, led the "Little Beavers" in the Okinawa campaign, and as the Japanese Empire crumbled, they returned to Pearl Harbor for a well-earned rest.

In February 1946, the "Little Beavers" were inactivated and placed in "mothballs" at Charleston, S. C.

The history books were reopened April 4, 1956 with the reactivation of Destroyer Squadron 23, under the command of Captain E. K. WAKEFIELD. By authority of the present Chief of Naval Operations, Admiral BURKE "The Little Beavers" were re-dedicated by Admiral Chester C. WOOD, Commander Cruiser-Destroyers, U. S. Pacific Fleet on December 10, 1956 in Long Beach, California.

Destroyer Squadron 23



Captain Lewis E. Davis, Jr., USN

Captain Lewis E. Davis, Jr., is a graduate of Pennsylvania Nautical School and George Washington University and was commissioned in 1941. He has served in USS WILKES BARRE and USS SITKA, and has commanded USS THOMAS E. FRASER (DM-24), USS H. D. CROW (DE-252), and USS FRED T. BERRY (DDE-858). He has served on the COMCRUDESANT Staff, and graduated from the U. S. Naval War College at Newport, R. I. and then served as Commanding Officer of USS BRYCE CANYON (AD-36).

Captain Davis, Jr. assumed command of Destroyer Squadron 23 on 24 November 1965.



Commander Henry G. Rollins Jr. USN, entered the Navy in December 1941, undergoing recruit training at the Naval Reserve Officer Training Center, San Diego, California. He entered the Naval Reserve Officer Training Corps Program in January 1944 while attending the University of New Mexico and was commissioned an Ensign in June 1946.

Commander Rollins has served in both the Atlantic and Pacific Fleets, on board the USS ELDORADO (AGC11), USS CARMICK (DD493), USS TAYLOR (DD648), the USS WALKER (DD517) where he was Executive Officer, USS CHOWANOC (ATF100), which he commanded, and the USS DIXIE (AD14) where he was Executive Officer. Commander Rollins came to command of the KYES from duty with the U. S. Naval Training Group, San Diego, California.

DESRON 23 STAFF



WOL Jospheh Kuginski
Staff EMO



LTJG George Bectold
Staff Communications Officer



LCDR Kevin Mulkern
Staff Operations Officer



LT David Mares
Staff Material Officer

The mission of the Staff is to assist the Squadron Commander in the discharge of his command responsibilities by carrying out the following; Gather and evaluate detailed and accurate information as necessary, prepare plans, schedules, directives and reports based upon such information or in compliance with directives received from higher authority. They also translate the decisions of the Squadron Commander into directives, disseminate information and reports to higher authority rapidly, accurately and completely.

EXECUTIVE OFFICERS

LCDR Joseph L. DICK, USN, relieved LCDR Bert MYATT, USN, as Executive Officer, USS JAMES E. KYES (DD-787). LCDR DICK's previous assignment was on the staff of COMPHIBRON 7 as Staff Material/Logistics Officer. The former Executive Officer's previous service included duty on board AVP and DD ships, and Assistant Naval Attache in Ottawa, Canada. LCDR DICK graduated from Northwestern University, Naval Intelligence School, and French Language School. LCDR DICK left for Naval Attache duty in Germany in October, 1966.

LCDR DICK was relieved by LCDR Clarence E. FEND in October, 1966.



LCDR FEND reported on board while the ship was operating in the Tonkin Gulf. LCDR FEND came to the KYES from United States Naval Post Graduate School, Monterey, California, and service aboard DD and SERVPAC type ships.

OPERATIONS

DEPARTMENT



LT Leon Hoffer
Operations Officer



LTJG Raymond Robinson
CIC Officer



LTJG William Feeney
Communications Officer



LTJG Wiliard Caudell
Navigator



LTJG Francis Toth
EMO



ENS Thomas Cannon
Assistant EMO



ENS Robert Scarbrough
Assistant CIC Officer

OX DIVISION



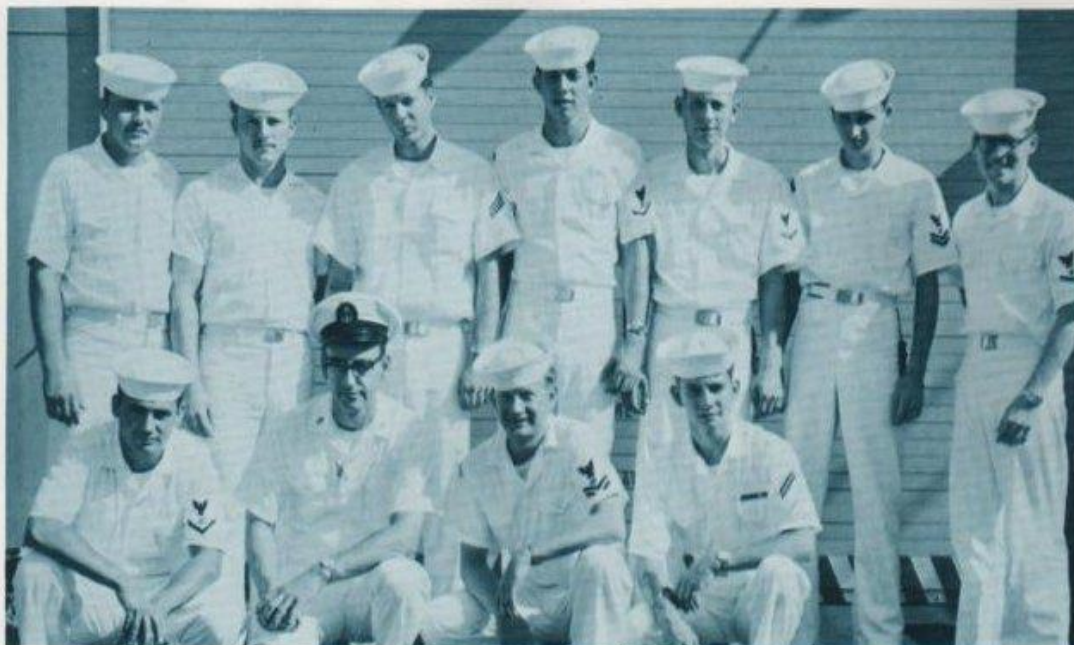
FRONT ROW, Left to Right: Groshong, R. R. PNSN, Olenick, E. V. YN3, Adams, B. W. SN. BACK ROW, Left to Right: Diver, D. R. PN2, Stindt, A. O. YN3, Koehler, R. J. QM3.

OC DIVISION



FRONT ROW, Left to Right: Poplin, L., Rommann, L., West, R., Rummel, R. H., Ketcherside, L. BACK ROW, Left to Right: Hilderbrant, T., Rummel, R. L., Price, A., Roy, L., Devoss, W., Morningstar, E., Pacey, C., Rodriguez, A., Majors, F., Spooner, J., Johnson, K., Herron, R.

OE DIVISION



BACK ROW, Left to Right: D. Knutson, R. Willeford, S. Krech, S. Majeski, J. Gusta, R. Perkins and M. Kelley. FRONT ROW, Left to Right: S. Macaluso, A. Dougall, R. Houghton, D. Fielder.

OI DIVISION



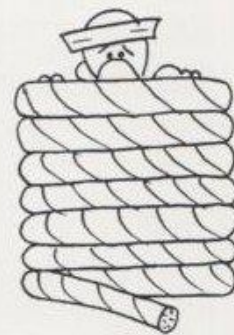
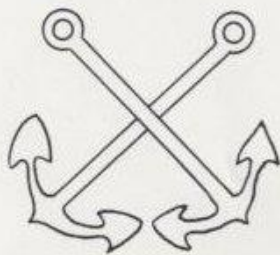
TOP ROW, Left to Right: Whitman L. A. RD3, Johnson R. A. RD3, Slaten J. R. RD1, Kerekes J. RD1, Merling J. B. RD2. BOTTOM ROW, Left to Right: Howell J. B. RDC, Nancarrow S. E. RDSN, Smallcanyon T. RD3, Henne H. G. RD3, Ramirez R. Q. RD2.

WEAPONS DEPARTMENT

The Weapons Department is made up of four different divisions, WA, WD, WG, and WH. These four divisions work as a team in the defense of our ship, while maintaining and operating their own gear.



LT F. P. Brouwer II
Weapons Officer



THE MTA BATTLESHIP



LTJG William Erickson
1st Lieutenant



ENS John Strebek
Gunnery Officer



ENS Gary Rousselo
ASW Officer

WA DIVISION



BACK ROW, Left to Right: Aken, E. L. GMG1, Schaler, K. D. STGSN Clavelle, K. (nmn) SN, Simundich, W. A. STGSN, Haggstrom, R. A. STG3, O'Neil, J. P. TM3, Lawrence, J. R. STC. FRONT ROW, Left to Right: Leach, D. K. GMG1, Dabb, K. J. STGSN, Donnelly, R. E. STG3, Wetmore, J. P. STG2, Zimmerman, R. E. STGSA, Atkins, L. A. GMG3, Dresbach, S. J. STG3.

WH DIVISION



LEFT: Lewis, J. E. ADR2. RIGHT: Spencer, C. EN1

WD DIVISION

WD Division is responsible for maintenance of the ship. The division is made up of nonrated and rated Boatswain Mates, and is one of the more versital onboard, due to the fact that the personnel man our gun mounts during general quarters, man and care for the ships' boat, and learn and practice basic deck seamanship.

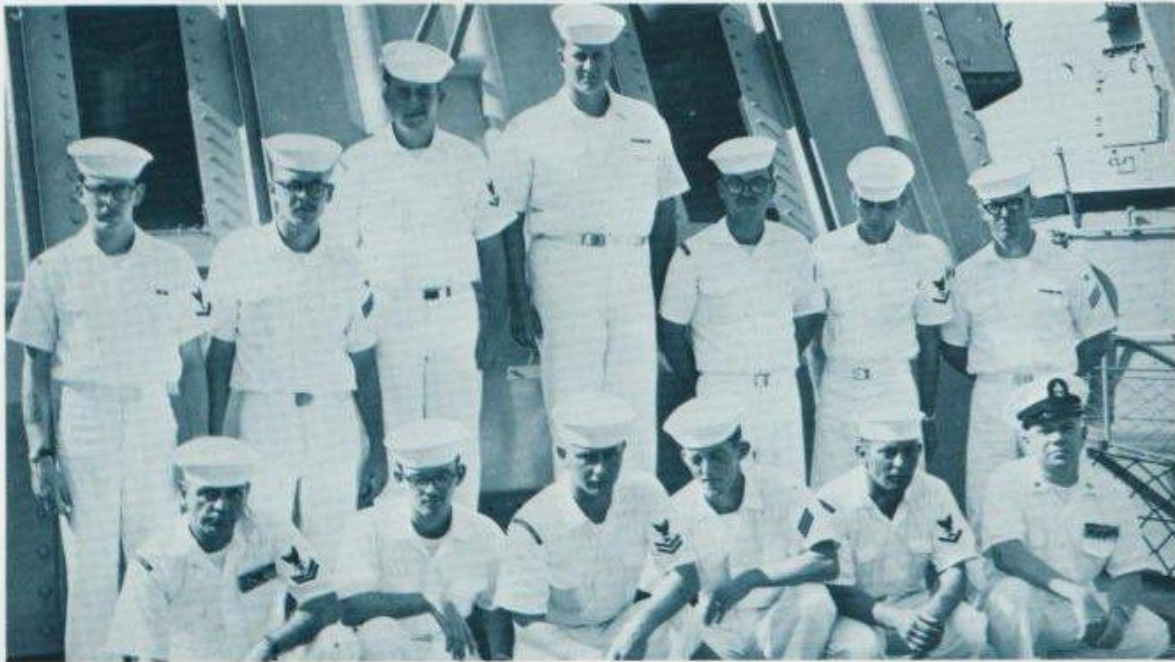


FRONT ROW, Left to Right: Peterson, SN, Jones, SN, Scott, BM3, Medearis, SN, Retter, BM3, Warren, SN. SECOND ROW: Hibdon, BM1, Dotson, SN, Sheperd, SN, Denbeck, SN, Kaye, SN, Wood, SN, Pickett, SN, Odell, SN, Weiss, SN, Pratte, BM2. THIRD ROW: Poth, SN, Hungarpillar, SN, U. K. Wardell, SN, Way, SN, Ruocco, SN, Wilkin, SN, Steinberg, SA.



WG DIVISION

WG Division is responsible for our gunnery. This alone is our main defense against aircraft or other surface ships. The Division is made up of two rates, Fire Control Technicians, who maintain and care for our director and computers, and Gunners Mates, who maintain and man our two 5" 38 gun mounts. The Fire Control Technicians, through the use of optical and radar range finding gear lock on and track unidentified surface and air contacts. The information is relayed through a computer to our gun mounts where the Gunners Mates track and stay on target.



FRONT ROW, Left to Right: Christiansen FTG2, Putney FTGSN, Hanson GMG2, Pierce SN, Dreihholz GMG3, Carpenter FTGM, BACK ROW, Left to Right: McEntee FTG3, Winters FTGSN, Smith GMG3, Blankenship SN, Hawn SN, Hamrell FTG3, McNamara FTGSN.



LOAD!!

ENGINEERING DEPARTMENT



LT Michael Burke
Chief Engineer



LTJG Bruce Elliott
MPA



ENS David Goldner
DCA

B DIVISION

BOILERMAN

Operate marine boilers and fireroom machinery: transfer, test, and take inventory of fuels and water. Also maintain and repair boilers, pumps, and associated machinery.



BACK ROW, Left to Right: Bell FN, Ryan BT2, Buresh BT2, Crowder BT1, Slater BT2, Wiley BT2, Morea BT2, Ashborn BT2, Creswell FN, Fletcher BT3, Miller BT1, Bouknight FN. FRONT ROW, Left to Right: Curry BTCS, Powers BT3, Smith BT2, Hogaboom BT3, Sulewski FN, Babbitt FN, Hills BT2, Hendon BT3.



M DIVISION

MACHINISTS MATE

Operate, maintain, and make repairs to ships propulsion and auxiliary equipment such as steam propulsion machinery, Shafts, Propellers, Pumps, Valves, Oil Purifiers, Heat Exchangers, Governors, Reduction Gears, and Related equipment.

EVAPERATOR GANG

Maintain, repair and operate distilling plants supplying feed water for marine type boiler use, and fresh water for shipboard use.



BACKROW, Left to Right: Vaught MM2, Cook MM3, Castaldi FN, Rowland FN, Johnson MM3, Hinspeter FN, Miller MM2, Niemann MM3, Osborn MM2, Rindels MM3, Mahoney MMFN, Mars FN, Hussey MM2, Scott MM2. FRONT ROW, Left to Right: Carpenter MMC, Justice MM1, Sorgea MM3, Dunn MM1, Kincaide FN, Conger FN, Tenney MM3, Czajowski FN, Cable FN.



SNIPE?

R DIVISION



FRONT ROW, Left to Right: Hackett T., Shingledecker R., Bingham C., Hanks M., McMorran D., Freeman J., Cisney D. BACK ROW, Left to Right: Cowart B., Wolfe D., Hawkins F., Doyle M., Dusing R., Buzee J., Smith S., Ocha M., Lombardi G., Turner R.

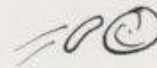


SUPPLY

DEPARTMENT



LTJG Joseph Lessa
Supply Officer



SUPPLY DIVISION



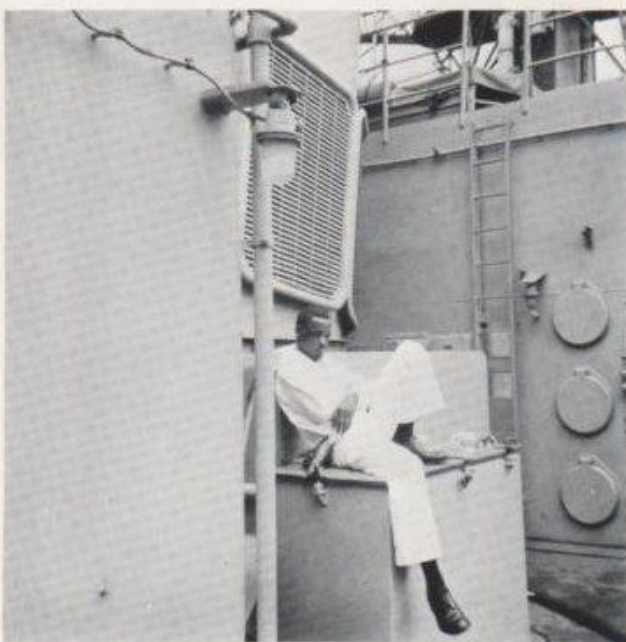
STANDING, Left to Right: Well, E. SH3, Ouelette, SN, Williams, J. SN, Patrick, SN, Wright, SN, Vasquez, SK2, Carter, SKC. SITTING, Left to Right: Randazzo, SN, Siefert, SN, Wagner, SD3, Hughes, SN, Federe, TN, Bisquera, SH2.

MESS COOKS



STANDING, Left to Right: Adley, SN, Dotson, SN, Dennis, Doyle, Pease, Trout, Steven. SITTING: Cisney, 1C1, Green, Napier, McMorran, Lee, Lewis.

Daily Routine



Overflight

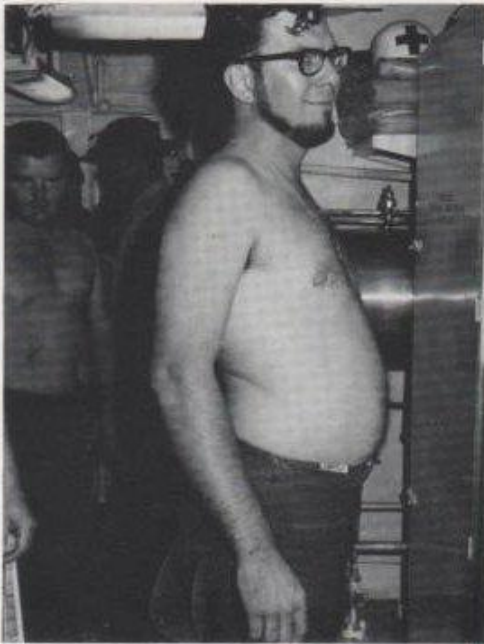
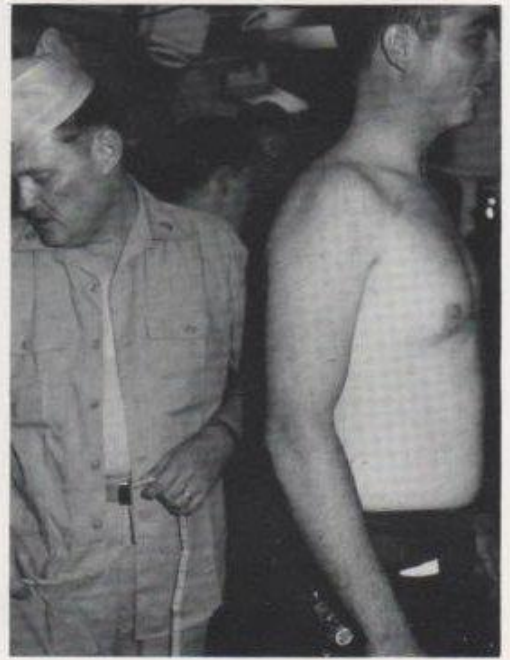


and Shipping Over



O'Neil Ships for Six

Bubble Club



Would you believe?

Beard Contest



Day's a winner



Wrong way



Birthdays!

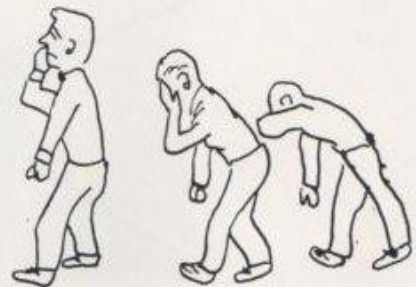


The cake, Doc?





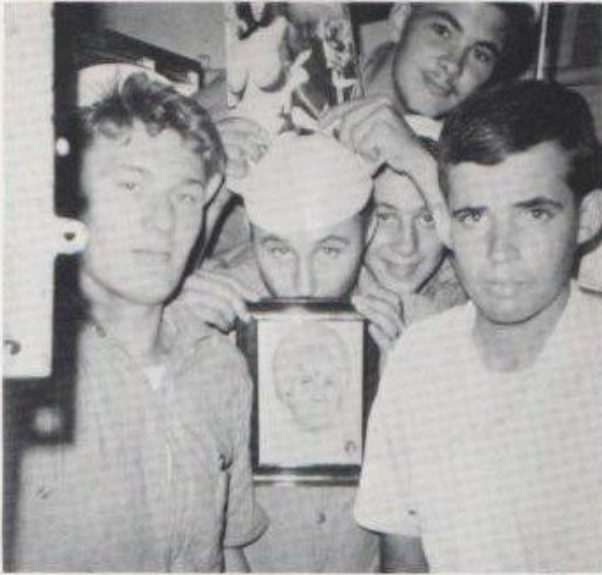
Makin' Chief



Gunfire Support



Wistful Thoughts





Ally

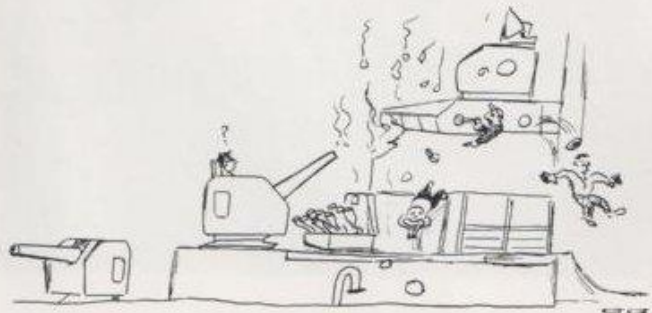


Junk patrol



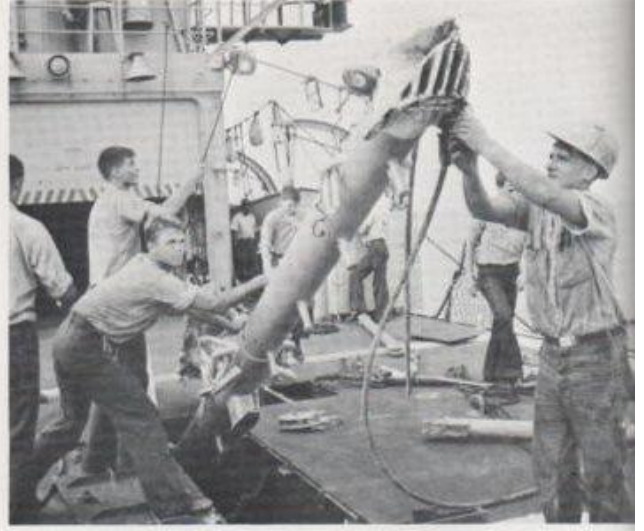


Back during the Big One.....



Battle mess





Let's see - Bolt A attaches....

And of Course UNREPS

....part B





Stores



Kyes Runs Plane Guard





All right, youse guys. . . .

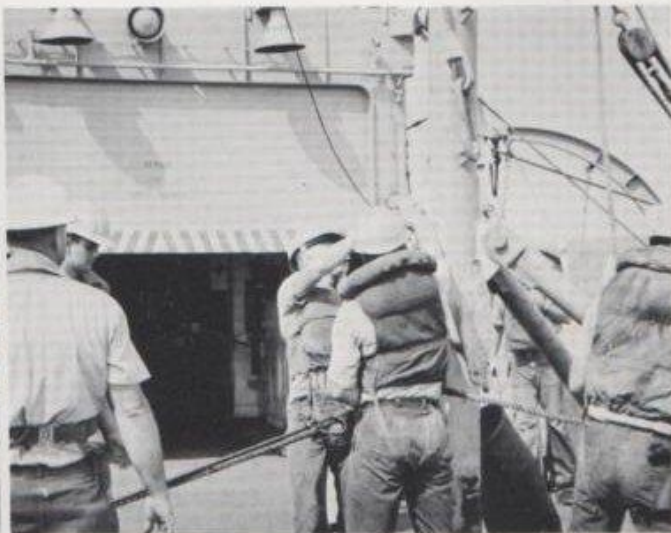
A S W



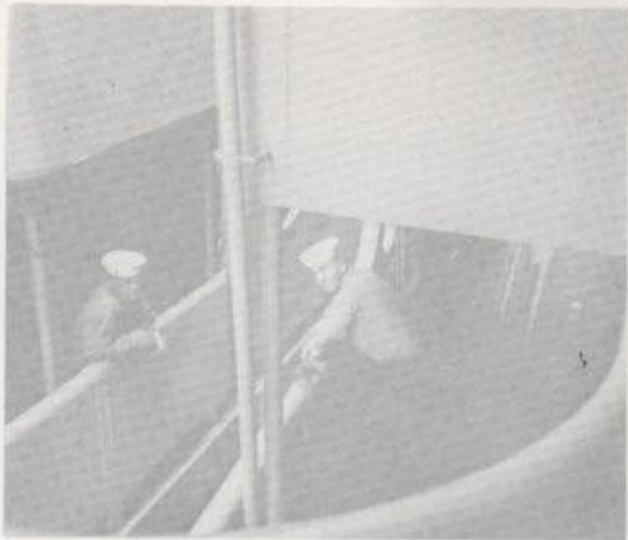
He's around here



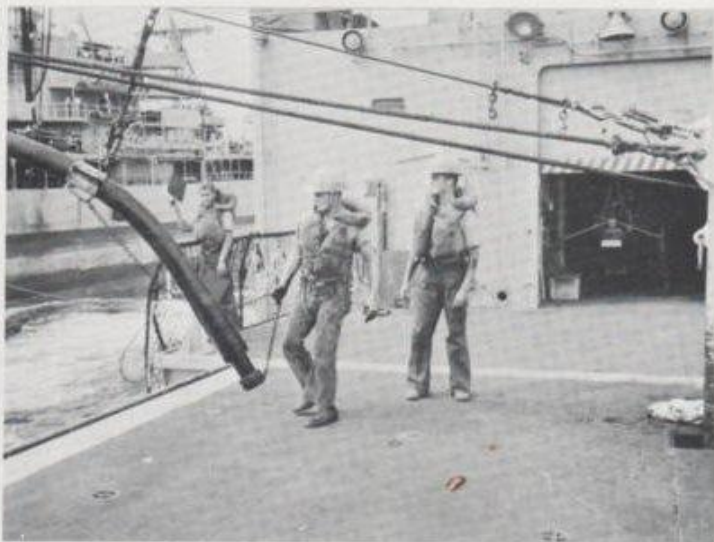
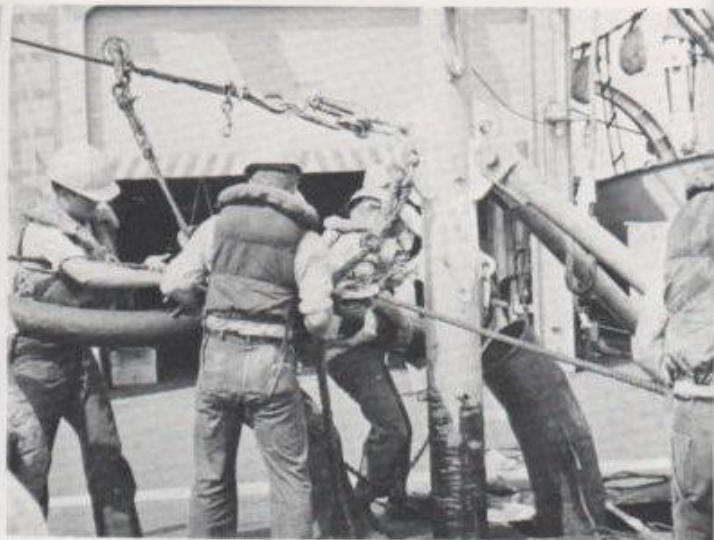
and NSFO



Lookin' for somethin', huh??

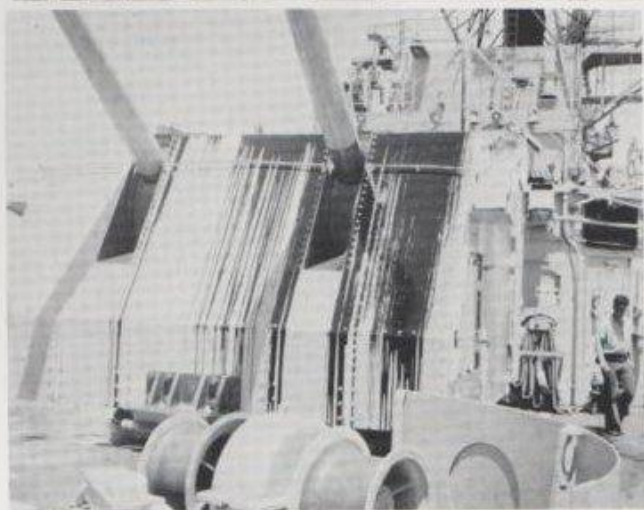


Kinda close, huh Cap'n??



Phone talker?





Now Godammit -
If you can't handle it

PORTS OF CALL



HAWAII

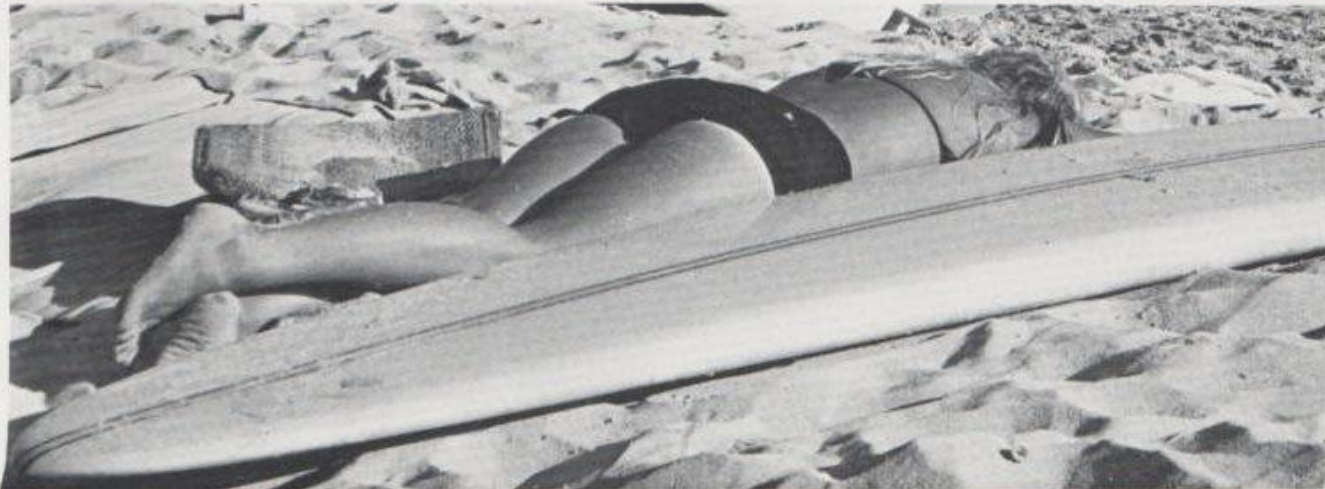
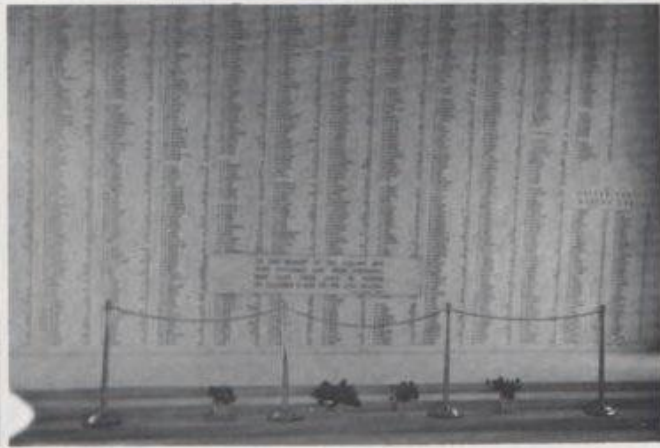
Hawaii is approximately 2,400 statute (2,100 nautical) miles southwest of San Francisco and consists of a narrow archipelago stretching 1,500 statute miles in a northwest-southeast direction.

The principal portion of the chain consists of seven inhabited major islands located in the 380 extreme southeastern statute miles of the group.

These islands are called, from southeast to northwest, Hawaii, Maui, Lanai, Molokai, Oahu, Kauai, and Niihau.

According to the estimate by the State Health Department, Hawaii's total population on January 1, 1964 was 730,585. About four-fifths of these people reside on Oahu; 337,831 within the city of Honolulu.

The Islands offer an unbelievable variety of scenery, often within a few miles; lush tropical and sub-tropical forests, arid desert areas, steep fluted cliffs, rock-bound coasts, cattle ranches, seascapes, flower gardens, cultivated plains, waterfalls, caves, and long sandy beaches ranging in color from almost white through the pinks and tans into black. In the winter snow can be found on Mauna Loa and Mauna Kea summits.



SASEBO

Sasebo, the westernmost city in Japan, lies on the south shore of the northwestern tip of Kyushu guarding the important narrows between Japan and the East China Sea.

The port is important primarily as one of the two major U. S. Naval bases in Japan. As a commercial port, Sasebo is relatively unimportant. Since the establishment of a naval station in 1886, it has developed into an important naval port. Prior to that, it had been an isolated hamlet. The considerable industrial development of the port was geared to the sole purpose of constructing and maintaining Japanese naval vessels. By 1940, the population of Sasebo has risen to 205,000, but the impact of World War II and the resulting sharp decline in production and overseas trade reduced the population. By 1951, however, the population figure had almost returned to its 1940 total.





SUBIC BAY

Subic Bay is located on the west coast of the island of Luzon approximately 35 miles north of the entrance to Manila Bay.

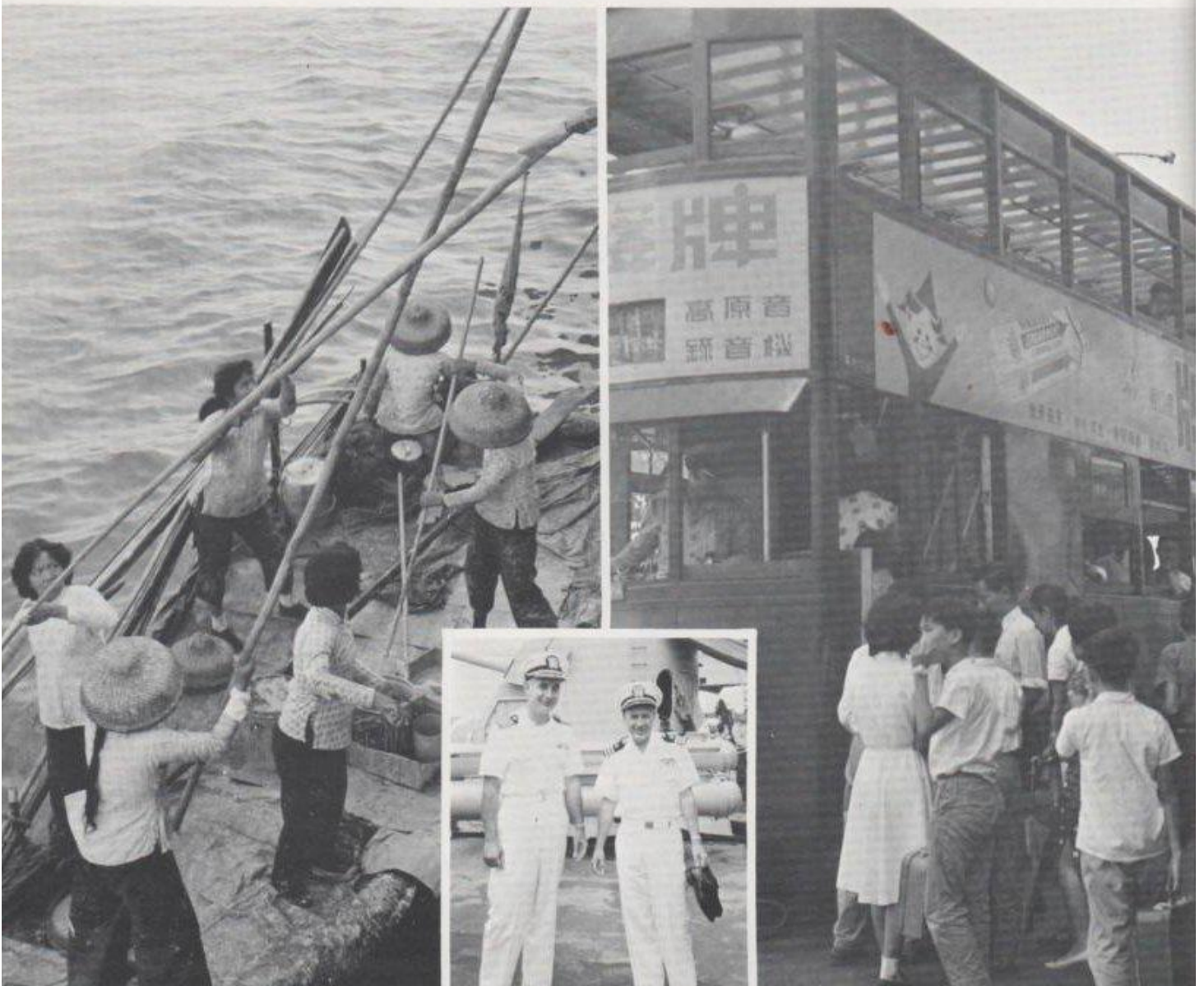
The capture of Manila by the Japanese on 2 January 1942 forced the government into exile in America. On 4 July 1946, in accordance with the provisions of an agreement made with the United States, the Philippines proclaimed their independence. Manuel Roxas and Elpidio Quirino were inaugurated as President and Vice-President. In the years since 1946, the Philippine Republic has struggled against an organization of dissidents commonly known as the "Huks" or the "HMB". The organization was started in March 1942 under the name of "Hukbalahaps" (The People's Army to Fight Japan). During the war, the Huks were active against the Japanese and to a lesser extent, against other Filipino guerrilla units. Following the liberation of the Philippines, the Huks did not completely disband or turn in their arms. At the end of 1949, the name of the Huks was changed, to the "Hukbong Mapagpalang Bayan" (People's Liberation Army) from which comes the common abbreviation HMB. Since that time, the Huks, in tune with world communism, have advocated the overthrow of the Philippine Government and the assumption of power by popular elements. However, during the recent years an understanding government has undertaken the rehabilitation of many ex-dissidents who have indicated their desire to return to peaceful and useful lives.



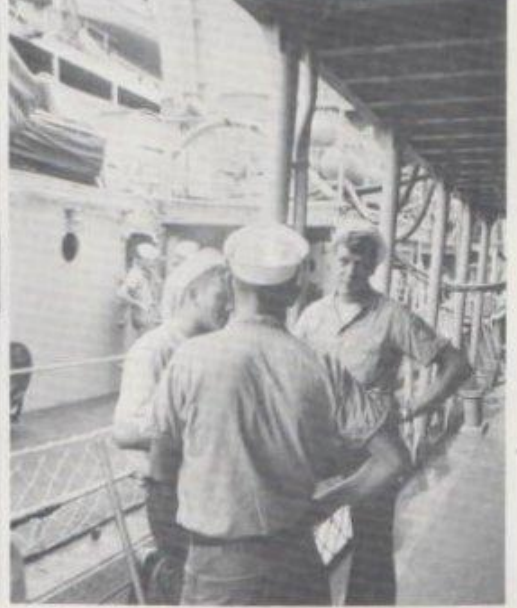
HONG KONG

The British Crown Colony of Hong Kong comprises an area of approximately 391 square miles and includes the Island of Hong Kong and a section of the mainland which is divided between Kowloon and the New or Leased Territories. Numerous uninhabited islands are also included in the New Territories. The principal business area is located on the Island of Hong Kong and is officially known as the City of Victoria although it is generally referred to as "Hong Kong".

Hong Kong Island is 11 miles long and varies in width from 2 to 5 miles. It rises steeply from the shore to a range of rugged hills, the highest point of which is 1,823 feet. The city of Victoria lies between these hills and the northern water front, and the urban area consists largely of reclaimed land. Numerous bays and inlets, as well as subtropical vegetation, make Hong Kong Island a place of great scenic beauty. The harbor itself is considered to be one of the most beautiful in Victoria, a distance of about 1 mile. The Kowloon Peninsula is fairly flat and is divided from the New Territories by a range of hills.



CANDIDS





CANDIDS



OFFICER'S CALL

CAPT Lewis E. Davis, Jr.
 CDR H. G. Rollins
 LCDR Clarence E. Fend, Jr.
 LCDR Kevin Mulkern
 LT Leon E. Hoffer, Jr.
 LT Michael E. Burke
 LT Fredrick P. Brouwer II
 LT David L. Mares
 LTJG George Bechtold
 LTJG William F. Feeney
 LTJG Raymond L. Robinson

LTJG Willard G. Caudell
 LTJG Bruce G. Elliott
 LTJG Joseph J. Lessa
 LTJG William J. Erickson
 LTJG Francis A. Toth
 ENS David L. Goldner
 ENS John P. Strebel
 ENS Gary J. Rousselo
 ENS Robert R. Scarbrough
 ENS Thomas M. Cannon

All Hands To Quarters

ADAMS, Bert Walter II	SN	DENBECK, Jerry Lee	SN
AKEN, Edward Lee	GMG1	DENNIS, James Durrell	SN
ALLEN, Wallace David	EN3	DESHA, Carl Edward	BTC
ARAI, Robert Manabu	RD3	DEVOSS, William Darrell Jr.	SM3
AREHART, Randy Carson	CS3	DIVER, Douglas Ray	PN2
ARCHER, Lawrence Owen	BTFN	DONNAY, Roger Joseph	ET1
ASHBURN, Larry Dean	BT2	DONNELLY, Richard Edward	STG2
ASHCRAFT, Dwight Eugene	SN	DOUGALL, Arvin Richard	ETC
ASSAD, Salih Mohamad	FN	DOTSON, Herbert Melvin Jr.	SN
AYERS, Herbert Swofford	RM3	DOTSON, Robert Louis	SN
BABBITT, Max Boyd	FN	DOYLE, Michael James	FN
BAIZE, James David	STG3	DOYLE, Patrick Kelly	ICFN
BELL, David NMN	FN	DREIBHOLZ, William John	GMG3
BESTICK, James Vincent	SA	DRESBACH, Stephen James	STG3
BERKHEIMER, Harold Lonnie	FTGSN	DUKNOSEKI, David Francis	SN
BILDERBACK, Malcolm Dennis	GMMSN	DUNCAN, James Elbert	SN
BILLIMEK, George Anthony	EM3	DURHAM, Andrew NMN	EMC
BINGHAM, Carl Ralph	EM3	DUSING, Ronald Gerald	ICFA
BISQUERA, Felipe Acosta	SH2	EBERT, Alfred Hugo Jr.	FTG3
BLANKENSHIP, John Steven	SN	EISENHART, Kenneth Robert	QM3
BOSQUEZ, Ruben NMN	FN	EVANS, William Audie	MMC
BOUKNIGHT, Charles Edward	FN	FALES, George William	SN
BRENNER, Michael Norman	RMSN	FEDERE, Federico Gallardo	TN
BREWER, Charles Ray	SA	FIELDER, David Cheatham	SN
BURESH, Donald Frank	BT2	FRASHER, Robert Edward	SN
BURTLE, Richard Dale Jr.	FN	FREEMAN, Joseph Robert	FN
BURTON, Michael Frank	DC3	GARCIA, James NMN	MM1
BUZBEE, James Carroll	FN	GOLDEN, Carl Boyd Jr.	RDSN
CABLE, Jerry Dale	FN	GREEN, Kenneth Paul	FN
CARPENTER, Fernando Andrew	MMC	GRIMES, Phillip Andrew Jr.	ETR3
CARPENTER, Richard Albert	FTCM	GUSTA, James Leroy	ETR3
CARR, Ronald Nathern	FA	HACKETT, Terrance Leo	FN
CARTER, Earl Herbert	SKC	HAGGSTROM, Roy Allen	STGSN
CASTALDI, Victor Michael	FN	HALL, Stephen Dewane	FN
CHAPMAN, Glen Edger	SN	HAMRELL, Kenneth Richard	FTG3
CHRISTIANSEN, Donald William	FTG2	HANKS, Marion Cooper Jr.	EM3
CLAIR, Jeffery Alan	RM3	HANSON, Jean Pierre Eugene	RDSN
CLAVELLE, James NMN	SN	HARRIS, Robert Amos	ENFN
COLLINS, Gene NMN	RM3	HAWKINS, Fred Harrison	EMFN
CONGER, Robert Kay	FN	HAWN, Raymond Lloyd	SN
CONNELLY, Gerald Robert	FN	HAYES, Gerald Wayne	BT2
COOK, Peter Gale	MM3	HAYES, Robert Clark	SFC
COWART, Bobby Osborn	EM1	HENDON, Danny Ray	BT3
CRAWFORD, Bruce Edgar	FA	HERRON, Stephen Patrick	BT3
CRESWELL, George Aloysius	BT3	HEYWARD, Robert Edward	SA
CROWDER, Ferrell Maurice	BT1	HIBDON, William Daniel	BM1
CURRY, John William	BTC3	HILDERBRANDT, Thomas Russell	SN
CZAJKOWSKI, Thomas NMN	MMFN	HILLS, Edward Eugene	BT2
DABB, Kenneth Jeffery	STGSN	HOAGBOOM, Frank Edward	BT3
DAVIS, Calvin Augustus	STG3	HOPKINS, William Clyde	MMC
DAY, Gary Louis	FTG3	HOUGHTON, Ralph Barton	ETR2
DE LEON, Karuso Dalle	TN	HOWELL, "J" "B"	RDC
DELUTIS, Joseph Fiorindo	ATR2	HUDSON, John Edward	BTFN

HUGHES, Robert Paul	SN	O'NEILL, John Patrick	TM3
HUNGERPILLAR, Clifford Allen	SN	OSBORN, Thomas Allen	MM2
HUSSEY, Elwood Francis	MM2	OTKINS, Michael Robert	SA
JOHNSON, Alan Monroe	MM3	OUELLETTE, Paul Emil Jr.	STGSN
JOHNSON, Keith Daryl	SM1	OUELLETTE, William Frank	SN
JOHNSON, Robert Allen	RD3	PACELEY, Charles Lee	SN
JONES, Robert Earl	SA	PAGE, Darrell Richard	RDSN
JONES, Robert William	SN	PARKER, Jim Vic	MMFN
JONES, Stephen Michael	SN	PATRICK, Kenneth Robert	SN
KAYE, Henry Leon	SN	PEASE, David Ward	FN
KELLEY, Michael David	ETR3	PEMBER, James Allen	SR
KETCHERSIDE, Lee Roy	RM1	PERKINS, Dean Roger	ETR2
KINCAIDE, Terrance Michael	FN	PERSIKO, Richard Francis	SN
KINSEY, Robert Maurice	FA	PETERSON, Melvin Lee	DK3
KNIGHT, John Hayden	SN	PETERSON, Walter Carl	SN
KNUTSON, Duane Darrell	ETN3	PICKETT, Dennis Clyde	SN
KOEHLER, Robert James	QM3	PICKRELL, Robert Allison	ICFA
LANDERS, John Edward	RD3	PIERCE, Henry Lee	SN
LANE, Vernon Winston	SA	POTH, Gaylord Ralph	SN
LEE, Terry Allen	SN	POWERS, Walter Eugene	BT3
LEWIS, Jackie Edward	ADR2	PRATTE, Melton Eugene	BM2
LIBORIO, Gordon Edwin	CSSN	PRICE, Albert Clarke	RM3
LOMBARDI, Guy Julius	FN	PUTNEY, Robert Charles	FTGSN
LOVELACE, Johnny George	RMSN	PYLE, Larry Raiston	PC3
LUCERO, Teodoro Lipat	TN	RAMIREZ, Robert Quiroz	RD2
LUPO, Francis Anthony	SN	RANDAZZO, Charles John	SN
MAAHS, William Orville	SN	RANDOLPH, Carl Ellis	RD3
MACALUSO, Samuel Phillip	ETN3	REOME, Dennis Ray	RDSN
MACKLIN, Dennis Calvin	SA	RETTOR, Philip Denny	BM3
MACMORRAN, David Elliott	FN	RHYNE, Walter Keithell	SN
MAHN, Brian Jay	SA	RODRIGUEZ, Alex Sandoval	RM3
MAHONEY, Daniel Martin	MMFN	ROETERS, Gerry Barney	FN
MAJORS, Frank Gordon	SM3	ROMERO, Robert NMN	TN
MC MULLEN, Kenneth Robert	ETNSN	ROMMANN, Larry Dean	RM2
MC NAMARA, Raymond Chester	FTGSN	ROSSER, Lawrence Clifford	SN
MEDEARIS, Giles Samuel	SN	ROWLAND, Philip Hearl	MMFN
MERLING, James Bernard	RD2	ROYA, Lawrence Charles	SM2
MESSINGER, Dennis Wayne	SN	RUMMEL, Randy Lee	RMSN
MILLER, George Gilbert	BT1	RUMMEL, Richard Harold	RM3
MILLER, James Allen	SN	RUOCCO, Angelo Ira	SN
MOLITOR, Steven George	FA	RUTH, Lawrence William	CS1
MOORMAN, Dennis Edward	SN	RYAN, Donald Edward	BT2
MOREA, Joseph Natale	BT2	SANTOS, Juan Rabago	CS1
MURFITT, Peter Morse	QMSN	SCHAEFERS, Gary Lee	SN
MURPHY, Marvin Patrick	SA	SCHMIDT, Kenneth Lee	SN
NANCARROW, Stephen Earl	RD3	SCHALER, Kenneth Douglas	STGSN
NAPIER, William Arthur	SN	SCOTT, Alvin Lavonn	MM2
NELSON, Keith Lynn	QMSN	SEIFERT, James William	SN
NIEMANN, Gerald Wayne	MM3	SHEPHERD, Jerry Leroy	SN
O'DELL, Leroy Dennis	SN	SHOPE, Johnny NMN	BT3
OLENICK, Eugene Vincent	YN3	SIMUNDICH, Walter Anthony	STGSN
OLSON, Gary Edward	MM3	SLATER, James Allen Jr.	BT2
O'NEIL, James Roger	QMC	SMALLCANYON, Teddy NMN	RD3
SMITH, Ronald Leroy	BT2	WAGGENER, Nathanfel Dillard	SD3
SMITH, Samuel NMN	SFP2	WARDWELL, David Allen	SN
SMITH, Terry Allen	MM2	WARREN, John Andrew Jr.	SN
SMITH, Terry Vernon	GMC3	WAY, Ronald Ray	SN
SNYDER, Charles Francis	STG3	WEISS, Allan Keith	SN
SORGEA, Frank Doyle	MM3	WEISTER, Norman Lee	RM3
SOUSANES, Nicholas NMN	CS3	WELLS, Edwin Eugene	SHL3
SPENCER, Clifford NMN	EN1	WEST, Robert Dewayne	RMSN
SPOONER, Jimmy Dean	RM3	WETMORE, James Phillip Jr.	STG2
STEINBERG, Allen Leslie	SA	WHITMAN, Lawrence Anthony	RD2
STEVENS, John Steve Jr.	FN	WILEY, Richard "D"	BT3
STINDT, Arthur Oscar	YN3	WILKINS, Carl Mitchell	SN
STODDARD, Theodore Hostetter	SHSN	WILLEFORD, Roger Dale	ETR3
SULEWSKI, Phillip John	FN	WILLIAMS, James Ed	SN
TAYLOR, Bruce Wayne	FTGSN	WILSON, William Henry	ETR3
TENNEY, Larry Eugene	MM3	WILSON, Gerald Lynn	SA
TERRA, Jerry Joseph	FN	WINTERS, Ronald David	FTGSN
THOMPSON, James Russell	ETNSN	WOLFE, Don Eugene	EM2
TROUTT, Robert Louis Jr.	SN	WOOD, Daniel Michael	FN
TURNER, Raymond Alfred	SN	WRIGHT, Henry Lee	SN
TURNER, Richard Lawrence	EM3	WYATT, Thomas Jerry	MM2
VALLEJO, Wayne Zazaro	SA	YOUNG, Walker Kenneth	HM1
VANNOTE, Dennis Eugene	ETN3	ZAWART, William John	SN
VASQUEZ, Dionisio NMN Jr.	SK2	ZIMMERMAN, Richard Edward	STGSN
VAUGHT, William Edward	MM2		